

# BAOULE BRONZE

THE PENDANT PIECE ON THIS NECKLACE AND THE LOVELY GOLD COLOURED BEADS ARE MADE USING LOST WAX CASTING BY THE BAOULE PEOPLE OF THE IVORY COAST. THE GOLDEN BEADS ARE THREADED WITH TINY STRIPED AND PLAIN VENETIAN BEADS AND SOME LARGE GHANAIAN BEADS MADE FROM GROUND GLASS PUT INTO MOULDS AND REFIRED, WITH THE COLOURS WORKED IN LAYERS AS THEY ARE FIRED.

3 Now divide the threads, taking three to each side of the necklace. Work each through three tiny beads and two flat beads, and then bring the three together again to pass through another flat bead and one powder glass bead.



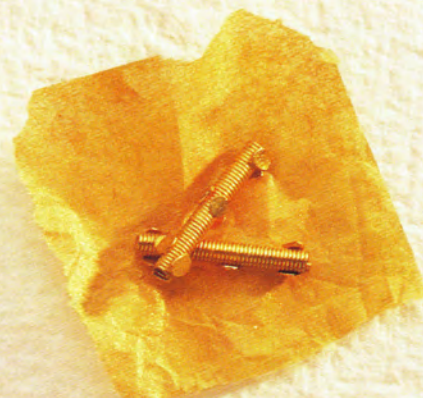
**YOU WILL NEED**  
 Round-nosed pliers  
 Scissors  
 Needle  
 Glue

**FOR THE NECKLACE**  
 The basic items listed below and the beads shown opposite:  
 Bought hook and eye or wire to make one  
 2.25m (2½yd) thread  
 1 pendant

1 Cut three 75cm (2ft 6in) lengths of thread and put the pendant in the middle of them. Work all six threads through one of the flat Baoule beads.

2 Divide the threads and put each through three tiny beads and two flat beads, then work them back together through another flat bead.

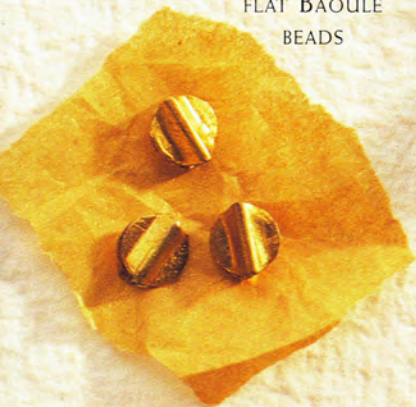
20  
 LONG BAOULE  
 BEADS







42  
FLAT BAOULE  
BEADS



4  
POWDER GLASS  
BEADS



84  
TINY VENETIAN  
BEADS, STRIPED  
AND PLAIN

