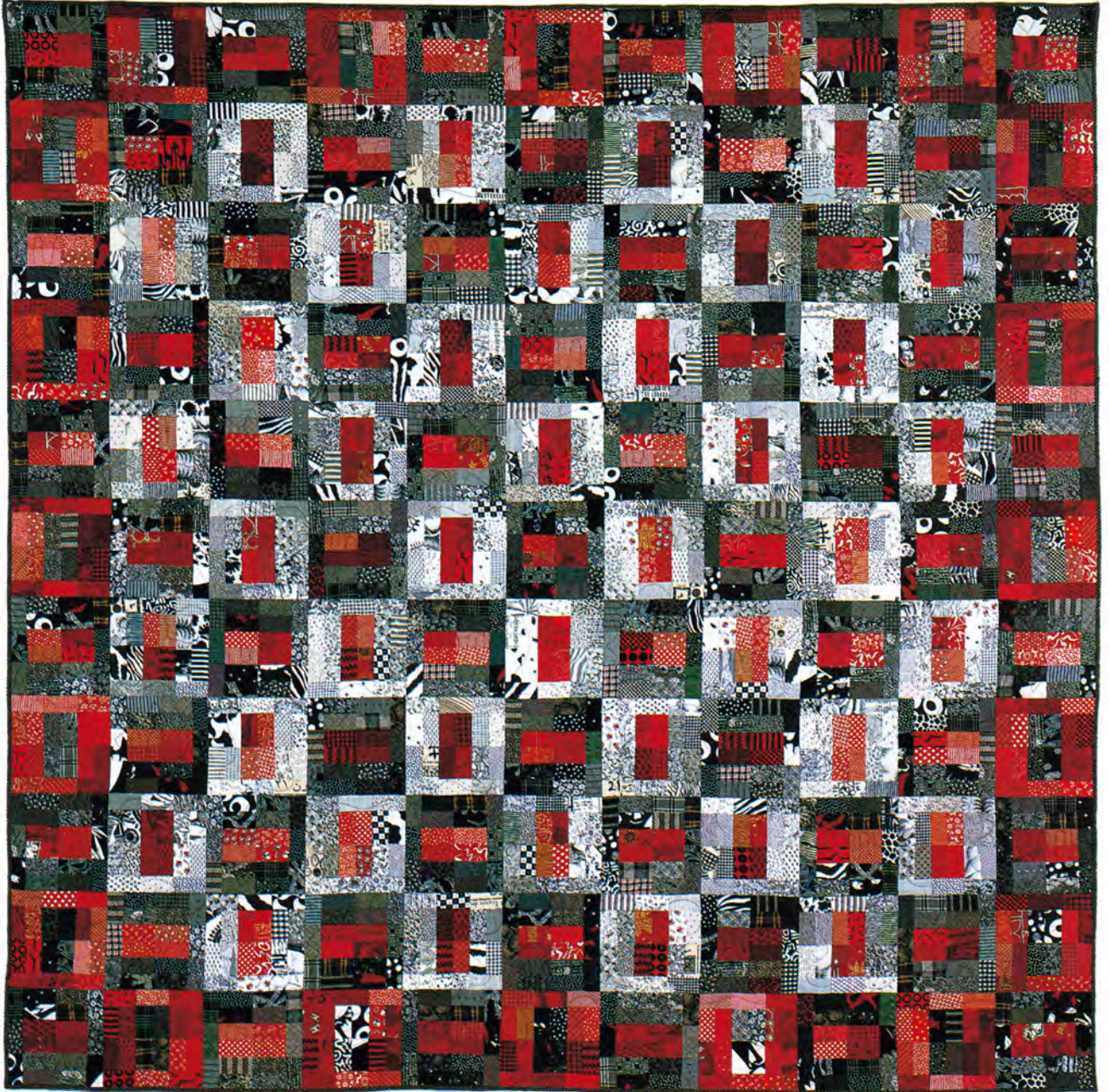


BLACK AND WHITE AND RED ALL OVER

BY JUDY TURNER. MACHINE QUILTED BY BARBARA GOWER.



JUDY AIMED FOR a contemporary look with this quilt. The fabrics include prints from the last three decades along with some prints commemorating the year 2000, the year the quilt was made. The prints include spots, stripes, checks, reproduction '30s prints, florals, tone-on-tones, Christmas prints, Japanese prints, batiks, African prints, and novelty prints. The border of the quilt is created simply by changing the colorway of alternate blocks in the outside row.

FINISHED QUILT SIZE:
99" x 99" (264 cm x 264 cm)

FINISHED BLOCK SIZE:
9" (24 cm) square

BLOCK DESIGN: 18:3

MATERIALS

44" (112 cm) -wide fabric

- 3 yds. (3.2 m) total of assorted black-and-white prints with white predominant, for blocks
- 5 yds. (5.2 m) total of assorted black-and-white prints with black predominant, for blocks and border
- 3³/₄ yds. (3.8 m) total of assorted red prints for blocks and border
- ³/₄ yd. (80 cm) black print for binding
- 8³/₄ yds. (8.3 m) print for backing
- 103" x 103" (274 cm x 274 cm) piece of batting

CUTTING

All measurements include ¹/₄" (7.5 mm) -wide seam allowances. Cut binding strips from width of fabric.

From the assorted black-and-white prints (white predominant), cut a total of:

- 560 rectangles, each 2" x 3¹/₂" (5.5 cm x 9.5 cm), for blocks

From the assorted black-and-white prints (black predominant), cut a total of:

- 934 rectangles, each 2" x 3¹/₂" (5.5 cm x 9.5 cm), for blocks and border

From the assorted red prints, cut a total of:

- 684 rectangles, each 2" x 3¹/₂" (5.5 cm x 9.5 cm), for blocks and border

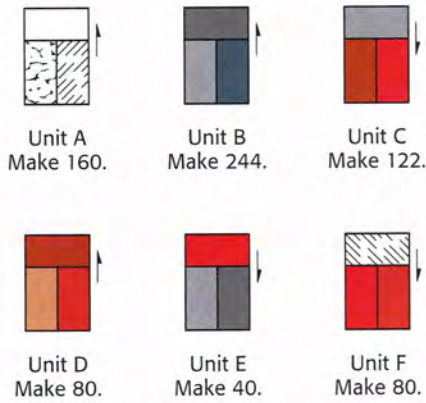
From the black print, cut:

- 10 strips (11 for metric), each 2¹/₂" (6.5 cm) wide, for binding

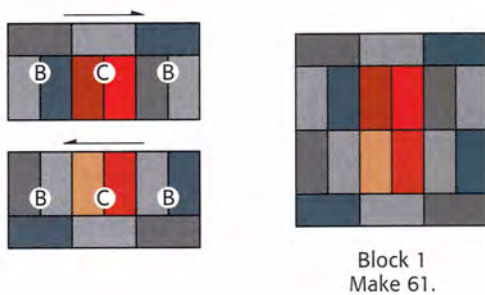
MAKING THE BLOCKS

YOU'LL NEED a total of 121 pieced blocks for this quilt. Avoid duplicating prints in the units and blocks.

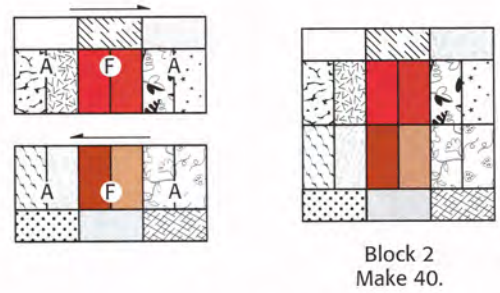
1. Sew the black-and-white print (white predominant) rectangles, black-and-white print (black predominant) rectangles, and red print rectangles to make the units shown. Press the seams as indicated by the arrows. Make 160 of unit A, 244 of unit B, 122 of unit C, 80 of unit D, 40 of unit E, and 80 of unit F.



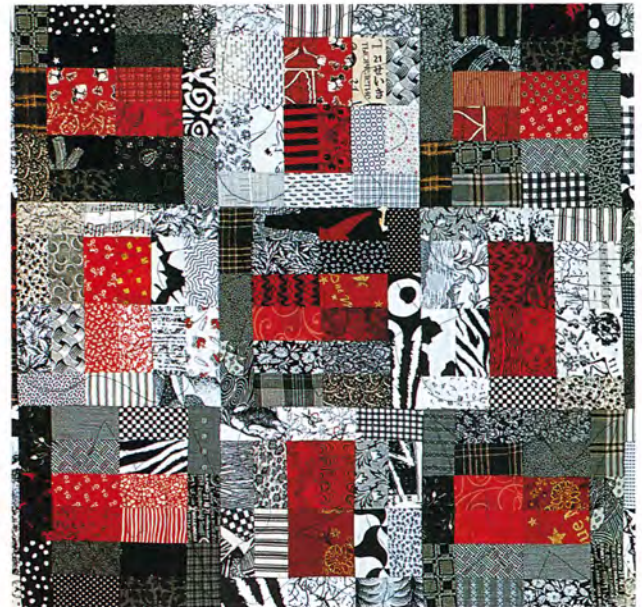
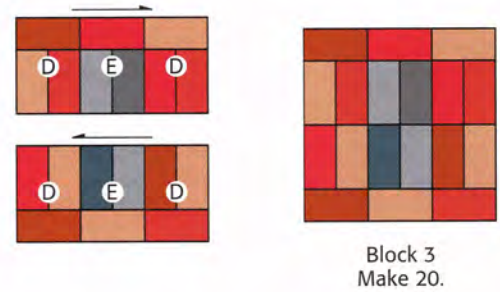
2. For block 1, arrange units B and C in 2 rows as shown. Sew the units into rows. Press the seams as indicated by the arrows. Sew the rows together to complete the block; press. Make 61 of block 1.



3. For block 2, arrange units A and F in 2 rows as shown. Sew and press as for block 1. Make 40 of block 2.



4. For block 3, arrange units D and E in 2 rows as shown. Sew and press as for block 1. Make 20 of block 3.



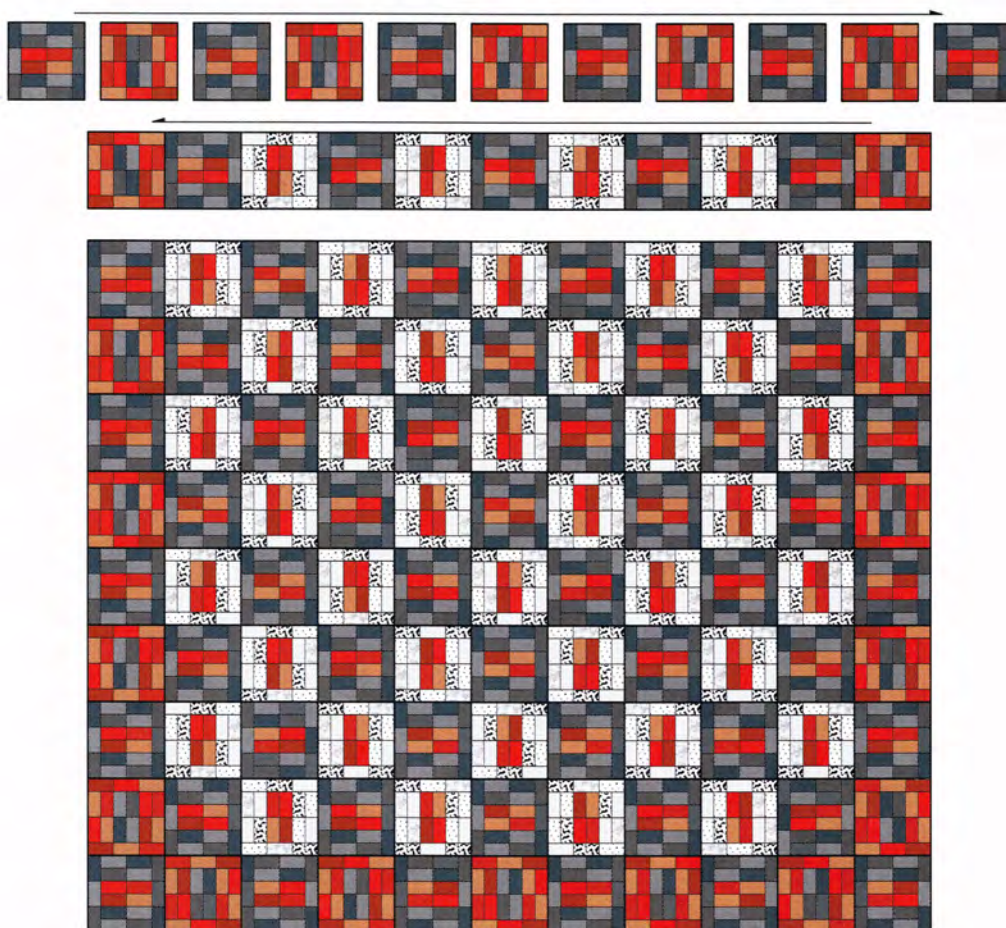
Note range of values used in the black, white, and red areas of the blocks.

ASSEMBLING THE QUILT

1. Refer to the quilt assembly diagram below. Arrange the blocks in 11 horizontal rows of 11 blocks each, making sure to alternate and to rotate the blocks as shown. The illusion of a border is created by alternating block 1 and block 3 units.
2. Sew the blocks together into rows. Press the seams in opposite directions from row to row.
3. Pin and sew the rows together; press.

FINISHING

1. Divide the backing fabric crosswise into 3 equal panels of approximately 105" (274 cm) each. Join the panels to make a single large backing panel.
2. Center and layer the quilt top and batting over the backing; baste.
3. Quilt as desired.
4. Use the 2½" (6.5 cm) -wide binding strips to make the binding. Sew the binding to the quilt.



Assembly Diagram