

Soldier Beetle

Cantharis fusca

ORDER: COLEOPTERA

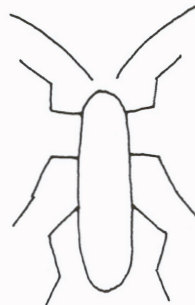
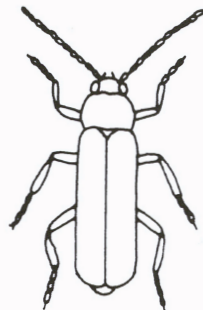
SUBORDER: POLYPHAGA

FAMILY: CANTHARIDAE



Requirements

- 10 cm (4 in) embroidery hoop
- black silk ottoman, 15 cm (6 in) square, or any fine-ribbed fabric or grosgrain ribbon
- black organza and Vliesofix, 15 cm (6 in) square
- dark orange-gold fabric or ribbon, small piece
- quilter's muslin or calico, 15 cm (6 in) square
- orange felt and fusible web
- orange stranded thread (DMC 900)
- dark orange stranded thread (DMC 919)
- black stranded thread (DMC 310)
- copper/black metallic thread (Kreinik Cord 215c)
- gold/black metallic thread (Kreinik Cord 205c)



skeleton outline

abdomen padding



- nylon thread (Madeira Monofil No.60, clear)
- Mill Hill petite beads (42014 black)
- 28-gauge uncovered wire

Order of work

Trace a skeleton outline of the soldier beetle onto the backing fabric. The abdomen and thorax are worked on the background fabric of the specimen box (silk or the fabric of your choice, backed with muslin or calico).

ABDOMEN

Apply one layer of felt to pad the abdomen then cover with satin stitch, worked horizontally, with orange thread.

ELYTRA

1. Fuse a layer of organza to the back of the black ribbed fabric (for support) and mount into the hoop. Using a paper template for the elytra outline (make sure the straight edges of the elytra are parallel to the ridges of the fabric) and black thread, couch the wire around the outline, leaving two tails, then overcast the wire to the fabric. Work a few diagonal stitches at each upper corner for the scutellum.

2. Cut out the elytra and catch both inner wires together. Apply over the abdomen, inserting the wire tails at the point indicated. Secure the wires at the back and trim.



elytra



wire

THORAX, HEAD AND EYES

1. Stitch the orange-gold fabric to the centre of the muslin, mount into the hoop and trace the thorax outline (or use a paper template). Using orange thread, couch the wire around the outline, leaving two tails, then buttonhole stitch the wire to the fabric.

2. Cut out the thorax and apply at the top of abdomen, inserting the wire tails at the points indicated (it slightly overlaps the elytra). Secure the wires at the back and trim.



thorax



wire placement

