



Dragonfly and Viburnum

Requirements

- 5" or 6" embroidery hoop
- 4" embroidery hoop
- Tracing paper (GLAD Bake) – 6" (15 cm) square
- Ivory satin – 8" (20 cm) square
- Quilters' muslin/calico – 8" (20 cm) square
- Green mottled organza – 6" (15 cm) square
- Pearl organdie – 6" (15 cm) square
- Vliesofix (paper-backed fusible web) – 6" (15 cm) square
- Uncovered cake decorators' wire – 28 gauge
(cut in $4\frac{3}{4}$ " or 12 cm lengths)

- Needles: - Crewel/Embroidery sizes 9 and 10
- Straw/Milliners sizes 1 and 9
- Sharps size 12 or Beading size 12
- Yarn Darners size 14

- Beads: - Mill Hill Small Bugle Beads 70374 (Dark Teal colour)
- Mill Hill Petite Beads 40374 (Dark Teal colour)
- Mill Hill Seed Beads 374 (Dark Teal colour)
- $\frac{3}{16}$ " (4 mm) glass bead (Hot Spotz SBX6-449)
- Mill Hill Glass Seed Beads 145, 2005 (light and medium pink)





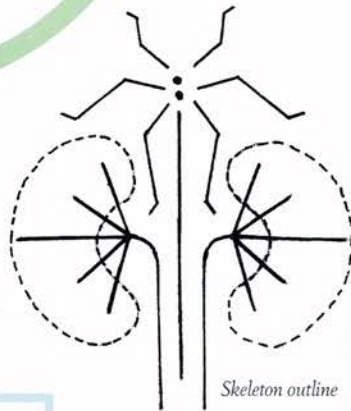
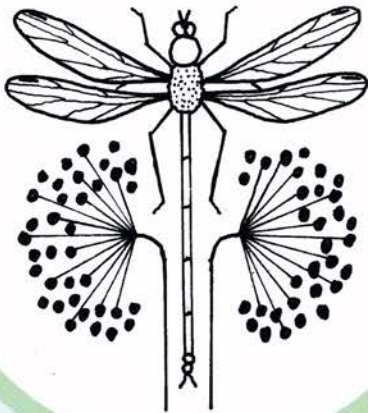
• Threads:

Viburnum

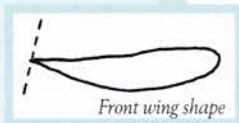
- Pink stranded (DMC 818, 776, 3326, 899, 335)
- Green stranded (DMC 3363)

Dragonfly

- Green rayon machine embroidery (Madeira Rayon No.40 colour 1047)
- Nylon clear thread
- Peacock-green blending filament (Kreinik Blending Filament 085)
- Black blending filament (Madeira Metallic No.40 colour 70)
- Gold/black metallic (Kreinik Cord 205c)
- Dark green chenille thread (Hunter-olive variegated chenille)
- Dark navy stranded (DMC 939)



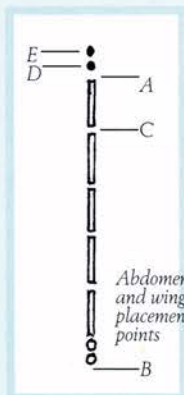
Skeleton outline



Front wing shape



Back wing shape



Abdomen and wing placement points

This project can be framed, or mounted into the lid of a small (3") Framecraft gilt pincushion, or inserted into a large (3 1/2") Framecraft paperweight with a recessed wooden base.



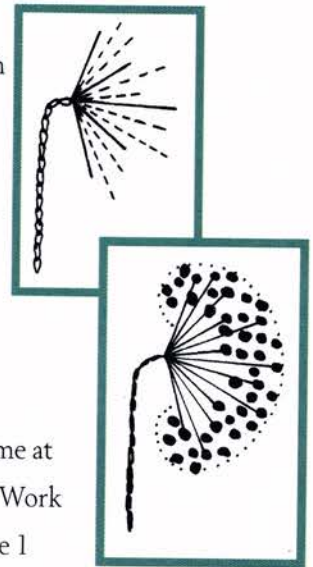
Order of work

1. Preparation

Mount the satin and muslin backing into a 5" or 6" embroidery hoop, stretching both fabrics tight. Trace the skeleton outline onto tracing paper with an HB lead pencil. Flip the paper over, centre the design over the muslin backing (lead pencil side down), and secure the edges with a little masking tape to prevent slipping. Draw over the lines with an empty ballpoint pen or a pencil, to transfer the design onto the muslin.

2. Viburnum Stems and Branches

Following the traced outline, tack the stems with one strand of green thread (3363). Embroider the stems in whipped chain stitch with two strands of thread. Work the row of chain stitch from the base of the stem, removing the tacking stitches as you go, then whip. The branches are straight stitches worked with one strand of thread. Work five straight stitches as marked on the tracing, then add eight more stitches of varying lengths (thirteen altogether on each side).



3. Viburnum Flower

Fill each flower shape with beads and French knots, working some at the end of the branches and scattering some within the traced outline. Work the French knots with six strands of thread and one wrap, using the size 1 Straw needle. Work five knots in each pink (818, 776, 3326, 899, 335), then apply the beads, about seven of each colour, using one strand of thread and two small stitches for each bead. Work about another five knots in each colour.

4. Dragonfly Abdomen

Following the instructions for Abdomen, Method One (page 48), use one strand of nylon thread in the size 12 Sharps needle, to work the abdomen with five bugle beads (70374) and two petite beads (40374). Use a double strand of peacock blending filament in the size 12 Sharps needle to work the fly stitch and 'tie-down'.



5. Detached Dragonfly Wings

Work and apply four detached wings following the instructions for Wing, Method One (page 52). Fuse the green mottled organza to the pearl organdie backing, one layer on the bias/cross grain. Mount the wing 'sandwich', green side up, into the 4" embroidery hoop.

Bend the wires into the two wing shapes, using the diagrams provided as a guide. Using one strand of green rayon thread (1047) in the size 12 Sharps (or size 10 Crewel) needle, stitch the wire to the fabric. Work two front and two back wings, making sure that you have a right and a left side wing for each.

Work the veins in each wing in single feather stitch, using one strand of peacock blending filament in the size 9 Straw needle. Embroider the pterostigma, using one strand of black blending filament in the size 9 Straw needle.

Carefully cut out the wings, then stitch the thread tails through to the back. Bend the wire tails of the wings at right angles before inserting both the back wings at D and both the front wings at E.

6. The Thorax

The thorax is worked with one strand of chenille thread in the Yarn Darnier needle. Work two padding stitches over the wing insertion points, then cover the padding stitches with four or five wraps (see (b) page 58).

7. The Head

Using one strand of dark navy thread, apply one $\frac{3}{16}$ " (4 mm) bead for the head, stitching with the hole towards the thorax. To work the eyes, apply two seed beads (347) together (from side to side), with two straight stitches, close to the head. Finish with one straight stitch between the beads towards the head to make the beads sit evenly.

8. The Legs

Using two strands of gold/black metallic cord in the size 9 Straw needle, work three back stitches for each leg using the tracing on the back as a guide. Work a fly stitch for the antennae with a single strand of thread.

