

# PROJECTS



**Y**ou now have all the information that you need to start embroidering and are now ready to start a project. You will find that I have started with the easier projects first and then gradually worked up to the larger, more complex projects. I suggest that you start with one of the small items before trying the harder, larger items.

## SAMPLERS

### FIRST SAMPLER

*Plate 1, p. 49*

### FIRST SAMPLER

Finished size: 26 cm (10¼ in) square

#### REQUIREMENTS

33 cm (13 in) square of light blue Lugana

2 balls DMC coton perle no. 5 in white

Tapestry needle no. 24

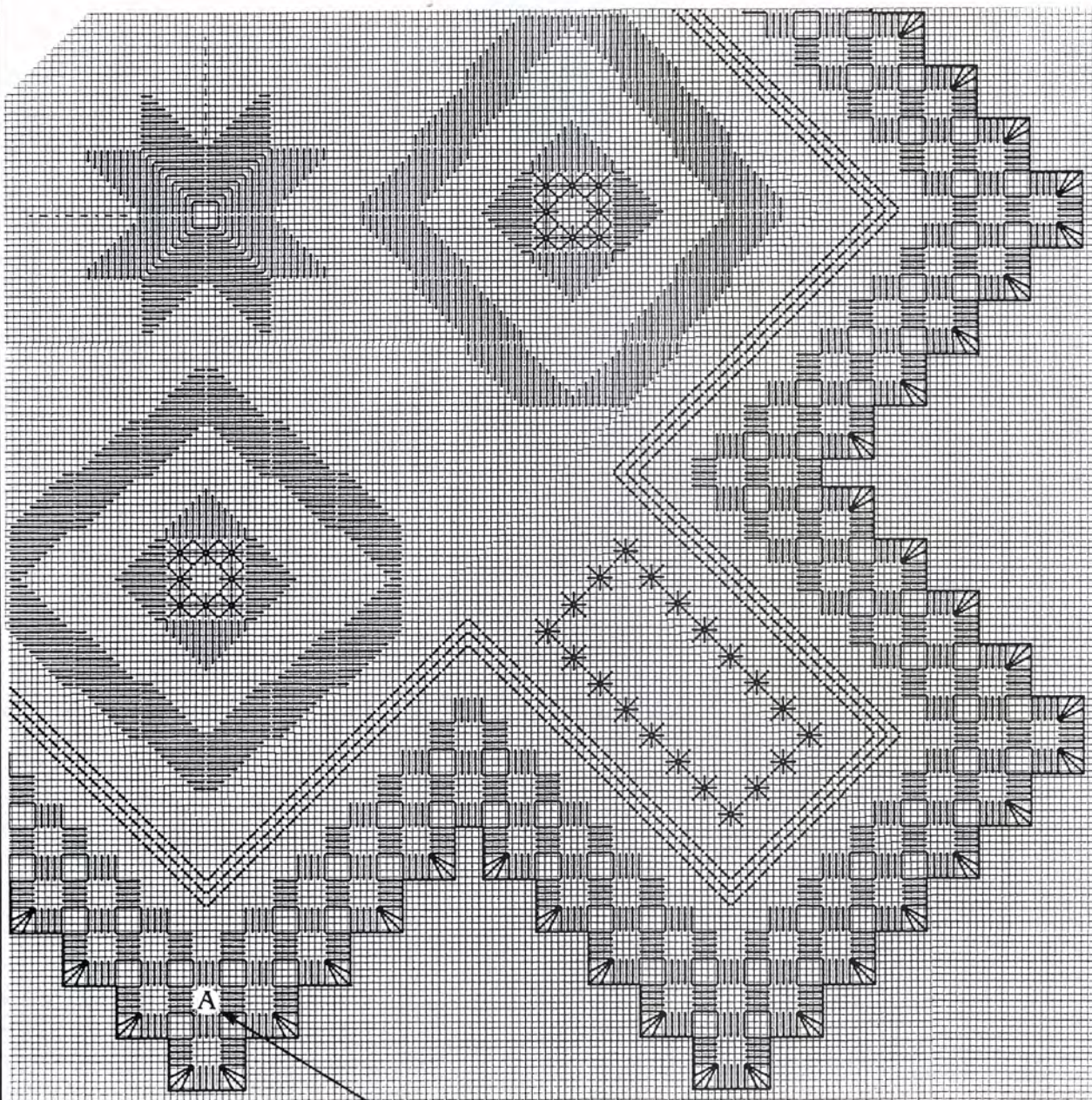
1 ball DMC coton perle no. 8 white

#### METHOD

Since this piece of fabric is square, the following measuring instructions can be made from any corner. Measure 19 cm (7½ in) along one side and 4 cm (1½ in) up from the bottom left corner. This is the starting point for your embroidery. Embroider the stitches in the following order:

- All the kloster blocks with coton perle no. 5.
- Double cable stitch with coton perle no. 8.
- All the satin-stitch patterns (the diamonds, star and square inside each diamond) with coton perle no. 5.
- Algerian eyelets with coton perle no. 8.
- Buttonhole stitch with coton perle no. 5.

After this has all been completed, cut out the work from the back. Place the scissor blade under the fabric threads next to the buttonhole stitching. Lifting each fabric thread, carefully cut out around the design. Press with a hot iron on the wrong side. You have now completed your first sampler.



Graph for first sampler

starting point

SECOND SAMPLER

Plate 2, p. 49

SECOND SAMPLER

Finished size: 23 cm (9 in) square

REQUIREMENTS

32 cm (14½ in) square of beige Lugana

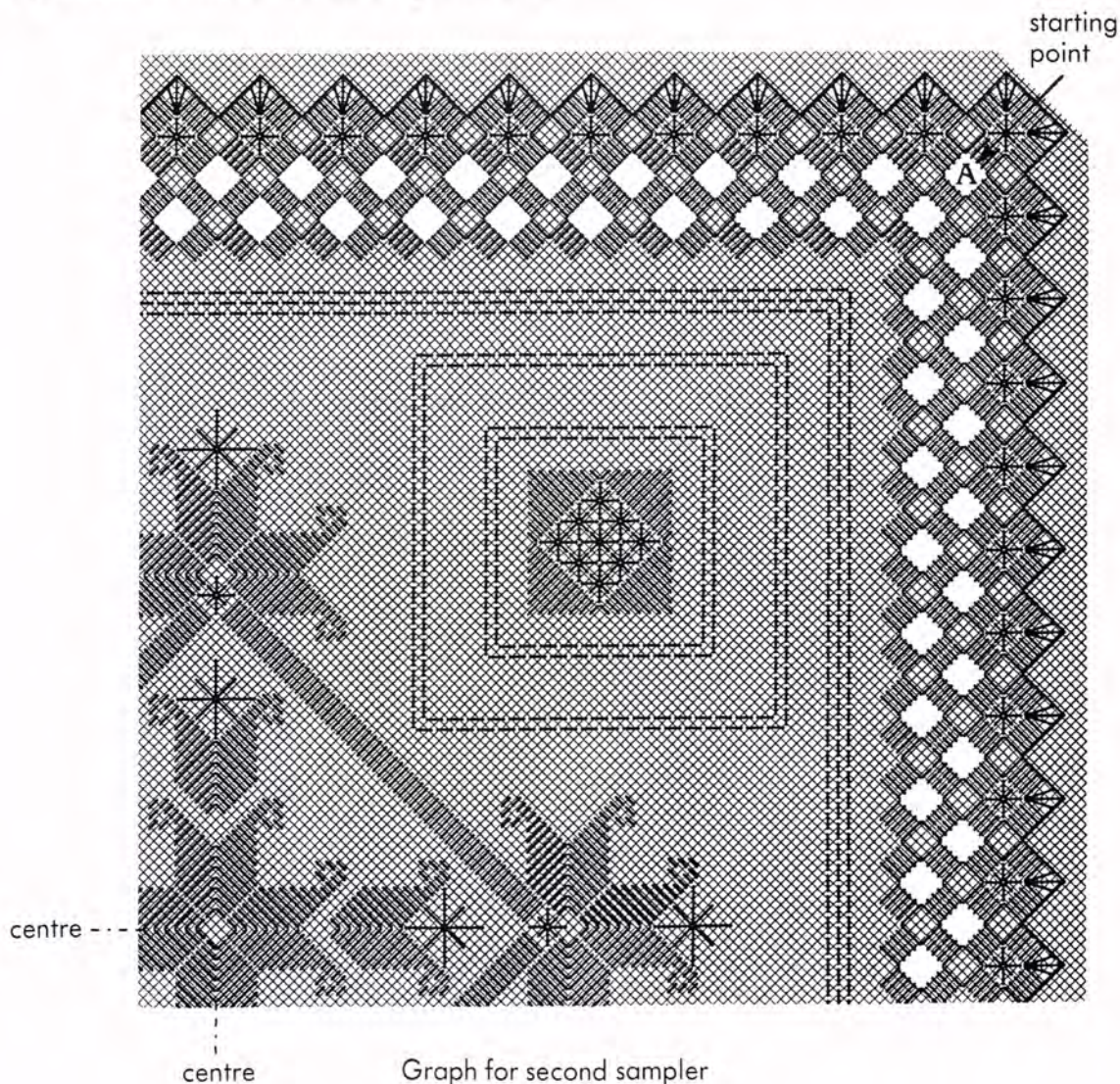
2 balls DMC coton perle no. 5 in colour 644

1 ball DMC coton perle no. 8 in colour 644  
Tapestry needles no. 24 and no. 26

## METHOD

This piece of fabric is a square. Measuring may take place along any side. Measure 18 cm (7 in) along one side and 2 cm ( $\frac{3}{4}$  in) up. This is the starting point of the embroidery. Embroider the stitches in the following order:

- Kloster blocks with coton perle no. 5.
- Double cable stitches with coton perle no. 8.
- Satin stitch with coton perle no. 5.
- Algerian eyelets with coton perle no. 8.
- Large eyelets with coton perle no. 8.
- Buttonhole stitch with coton perle no. 5.



- Eyelets between the kloster blocks and the buttonhole stitching with coton perle no. 8.
- Once all these stitches have been completed, the cutting can commence. Cut the fabric and needle-weave one section at a time, so the task does not seem so enormous.

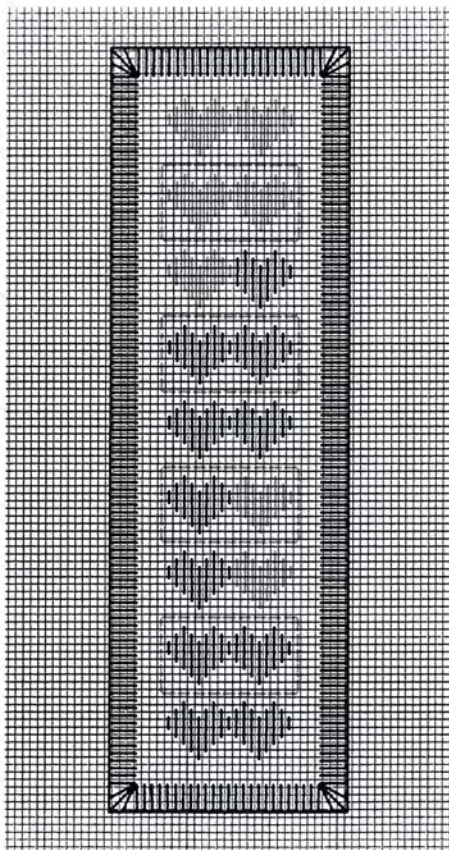
Finally, cut around the outside edge from the back. Place the scissor blade under the fabric threads next to the buttonhole stitching. Lift each fabric thread and carefully cut around the design. Press carefully on the wrong side.

## BOOKMARKS

*Plate 3, p. 50*

### HEART BOOKMARK

Finished size: 3 cm x 12 cm (1¼ in x 4¾ in)



Graph for  
heart bookmark