

YOU WILL NEED

- 4.5 m (5 yd) of main fabric
- 1 m (1 yd) of fabric for the letters
- 30 cm (12 in) of various fabrics for the leaves
- at least 25 cm (10 in) each of about twelve coordinating fabrics for the appliquéés
- 3 m (3 1/4 yd) of Vliesofix
- 3 m (3 1/4 yd) of iron-on stabiliser (Tearaway)
- 20 cm (8 in) of iron-on medium-weight Vilene
- 20 cm (8 in) of heat-vanishing muslin (Thermogaze)
- 4.5 cm (5 yd) of fabric for the backing
- full-size batting
- machine-embroidery rayon and metallic threads
- Bobbinfil (black and white) or fine polycotton or polyester for the bobbin
- polycotton or polyester thread to match the quilt back for machine-quilting
- monofilament thread for quilting and attaching braid
- 50 m (52 yd) of fine braid to edge all the blocks (optional)
- various coloured and dyed flat-backed rhinestones or beads for eyes and highlights
- gemstone glue
- thick gold thread for couching
- usual sewing supplies
- drawing and tracing materials

Medieval Inspirations Quilt

Finished size (after quilting):

170 cm x 210 cm (68 in x 83 1/2 in)

The letters for this medieval quilt were derived from 15th and 16th century wood blocks, simplified a little to make them easier to appliqué (although there are still some tight corners). The D, G and I were totally changed to make them recognisable to modern eyes, but they are still in keeping with the medieval feel.

Instead of the alphabet being set out in conventional ABC order, this quilt is a 'hunt for the letter' affair. They are all there, interspersed with some purely pattern blocks and some border strips, taken from the letter block designs.

Although the blocks are of varying size, the actual letters are all the same height, 18 cm (7 in). This means they could be used in blocks of 25.5 cm (10 in) or 30.5 cm (12 in) very easily, to accommodate a more regular design.

The designs around the letters are inspired by the beautiful medieval tapestries and illuminated manuscript borders. Many medieval borders are incredibly intricate and ornate, depicting creatures and foliage of every conceivable design. Some creatures and flower shapes occur often throughout the period, others seem to be rather uncommon. The flowers and creatures on the quilt are representative of many examples. They could be changed from block to block, the designs enlarged or reduced, or used in different combinations on many projects.

There are five Australian motif designs, which are not found on any medieval manuscripts, of course. However, they fit very well in this context, particularly the lyre

bird whose tail is very reminiscent of the peacock's tail, for design purposes.

For the appliquéés, you will find you use three or four fabrics most frequently, but having twelve gives you the option of more variety. They can be cottons, silks, hand-dyed fabrics, prints or plains.

THE BLOCKS

See the individual block designs, templates and instructions on pages 22–53.

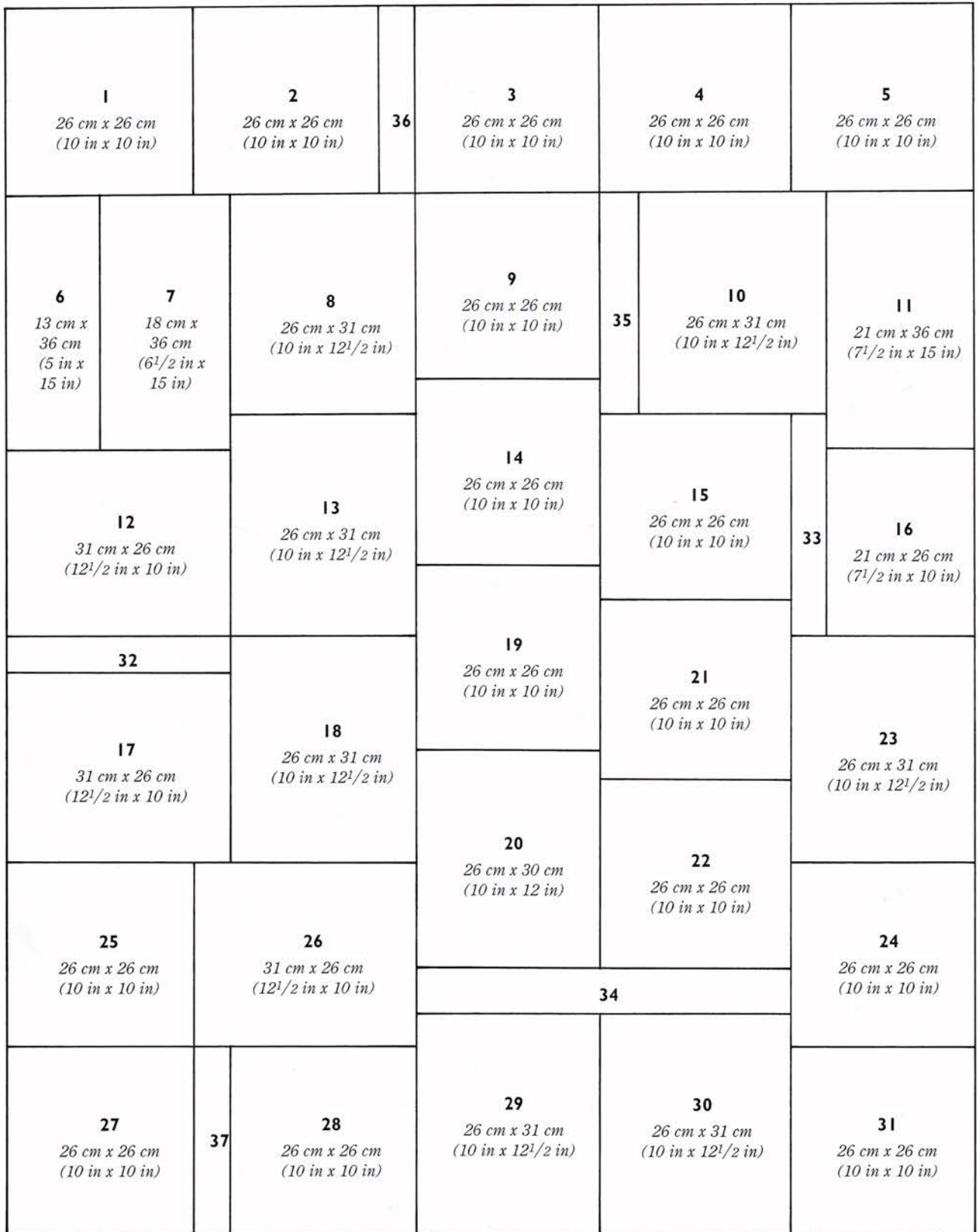
To make the quilt as it is, all the measurements are given on the quilt diagram on page 16. Follow the general instructions for techniques on pages 4–13 and the particular instructions that accompany each block. Remember, the block designs are given at half size and will need to be enlarged before they are traced.

THE BORDERS

Note: Complete as much work as possible on the borders before attaching them to the quilt centre, mitring the corners. Any three-dimensional and padded work is added after the borders are attached and the quilting is completed.

- 1 From the main fabric, cut two strips 16.5 cm x 228 cm (6 1/2 in x 90 in) and two strips 16.5 cm x 190 cm (6 1/2 in x 75 in). These measurements allow for mitred corners.
- 2 The top border has flowers from the Block 14 (S Block) and the Block 23 (E Block). Prepare and stitch these in the same way as for the blocks.
- 3 The left-hand border has the three left-hand side towers from Block 31 and the right-hand border has the three right-hand side towers. The towers are half as





Quilt Diagram

Block 32: 31 cm x 5 cm (12¹/₂ in x 1¹/₂ in)

Block 33: 5 cm x 31 cm (1¹/₂ in x 12¹/₂ in)

Block 34: 52 cm x 6 cm (21 in x 2 in)

Block 35: 5 cm x 31 cm (1¹/₂ in x 12¹/₂ in)

Block 36: 5 cm x 26 cm (1¹/₂ in x 10 in)

Block 37: 5 cm x 26 cm (1¹/₂ in x 10 in)

big again as on the original block. Prepare and stitch in the same way. Place flowers and leaves at the base of the towers.

- 4 The design in the centre of the bottom border is taken from the Block 19 (A Block). The hare and the hound are taken from Block 20 (H Block).
- 5 Extra flower and leaf motifs have been taken from Block 2 (Z Block), Block 12 (X Block), Block 14 (S Block), Block 19 (A Block) and Block 25 (C Block). More or less appliquéés can be added to suit your personal taste.
- 6 The flowers from Block 18 have been made separately and stand away from the quilt (see page 5).
- 7 The dragon from Block 10 (D Block), the brogga from Block 24 (B Block) and the wren from Block 17 (W Block) have been made separately and padded as they were attached to the quilt (see page 6).
- 8 The dragonflies from Block 3 (V Block), and the bees, butterflies and snails (see the patterns for these on page 53) are made with three-dimensional appliqué (see page 5). The bees and dragonflies use heat-vanishing muslin for the wings (see page 9).

CONSTRUCTION

Note: Assemble the quilt, following the quilt diagram and the construction diagrams on pages 18-19.

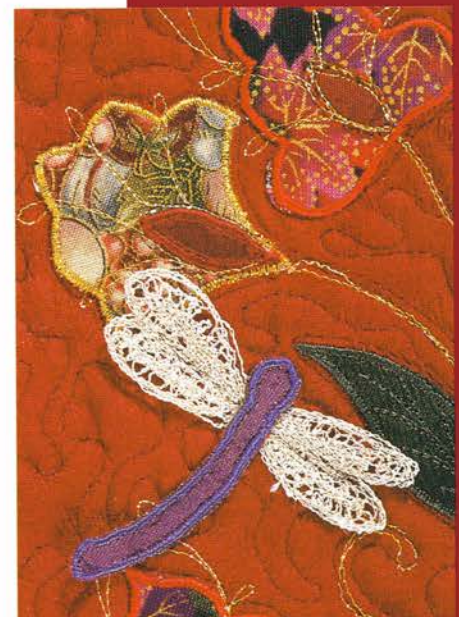
- 1 From the sashing fabric, cut strips 4 cm (1½ in) wide.
- 2 Join Block 1, Block 2 and Block 36 (Fig. 1). Set aside.
- 3 Join Block 6, Block 7, Block 12, Block 32 and Block 17 (Fig. 2). Set aside.
- 4 Join Block 8, Block 13 and Block 18 (Fig. 3).
- 5 Join the sets made in steps 3 and 4 together, side by side, then join the set made in step 2 to the top (Fig. 4).
- 6 Join Block 25 and Block 26 (Fig. 5). Set aside.
- 7 Join Block 27, Block 37 and Block 28 (Fig. 6).
- 8 Join the sets made in steps 6 and 7, then

join that to the bottom of the large section already joined (Fig. 7).

- 9 Join Block 3, Block 9, Block 14, Block 19 and Block 20 in one long strip (Fig. 8). Set aside.
- 10 Join Block 4 to Block 5 (Fig. 9). Set aside.
- 11 Join Block 35 and Block 10. Join a length of sashing to the bottom, then join Block 33 to the bottom right-hand corner (Fig. 10). This will be an odd-shaped set.
- 12 Join Block 11 to Block 16 (Fig. 11).
- 13 Join the sets made in steps 11 and 12 (Fig. 12).
- 14 Join the set made in step 10 to the top of the set made in step 13 (Fig. 13).
- 15 Join Block 23, Block 24 and Block 31 (Fig. 14), then join this set to the bottom of the set made in step 14. Join a length of sashing to the left hand edge of Blocks 33, 23, 24 and 31.
- 16 Join Block 15, Block 21 and Block 22 (Fig. 15), then join this set to the large set made in step 15 (Fig. 16).
- 17 Join Block 29 and Block 30, then join Block 34 to the top (Fig. 17). Join a length of sashing to the top of this set. Set aside.
- 18 Join the long strip made in step 9 to the side of the large set of blocks made in step 16 (Fig. 18). The bottom of Block 20 should be level with the bottom of Block 22.
- 19 Join the set made in step 17 to the bottom of blocks 20 and 22, fitting the top right-hand corner squarely against Block 24 (Fig. 19).
- 20 Join the two large sections of the quilt top together with a length of sashing in between.
- 21 Join a length of sashing to all four sides of the quilt top.
- 22 Attach the appliquééd borders to the quilt top, mitring the corners.



Above: Detail of the appliquééd flowers on the quilt border.



Above: Detail of a dragonfly on the quilt border.

QUILTING

- 1 Pin the three layers of quilt together following the instructions for machine-quilting on page 10.
- 2 Using a walking foot, first complete all the straight line quilting, in the ditch, outlining all the blocks.
- 3 Quilt the blocks with the free machine-stitching technique, outlining the appliques and filling any spaces with stipple quilting. See the instructions for free machine-stitching and stipple quilting on pages 8–11.

TO FINISH

- 1 Cut 6 cm (1 1/2 in) wide binding and attach it to the front of the quilt, mitring the corners. Turn the binding to the back of the quilt and slipstitch it in place by hand.
- 2 Couch the braid on, following the instructions for couching on page 13.
- 3 Attach the three-dimensional and padded pieces, following the instructions on pages 5–6.
- 4 Stitch on a rod pocket, following the instructions on page 11.

Label your quilt and it is finished!



Fig. 1

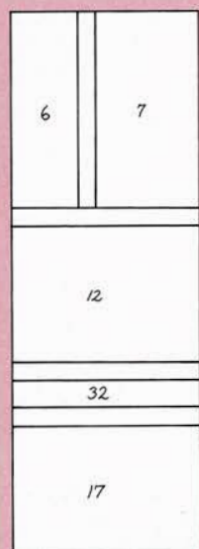


Fig. 2



Fig. 3

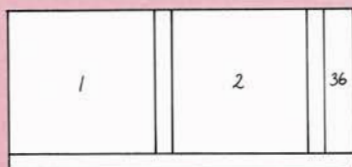


Fig. 4

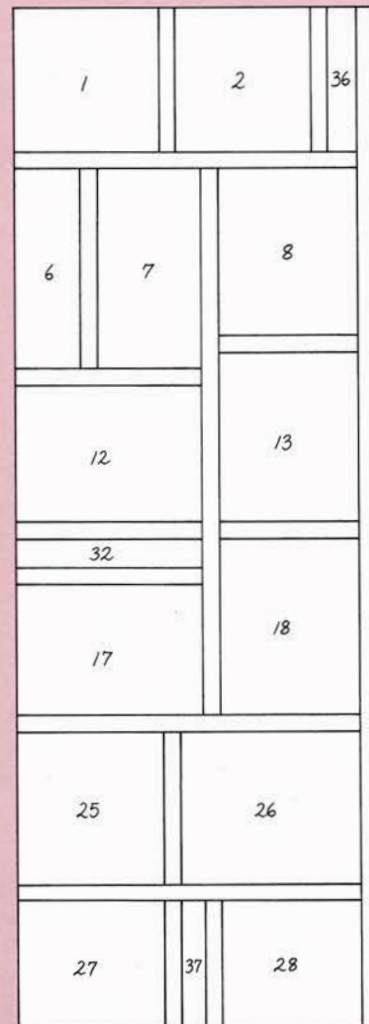


Fig. 7

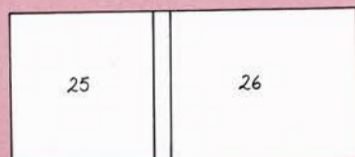


Fig. 5

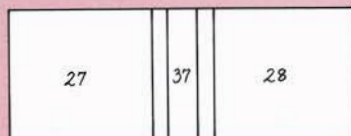


Fig. 6