



17+2

17 Clove Pinks

Using yarn **A**, make the foundation chain and work Rows 1 and 2 as left. Rep Rows 3 and 4, changing yarns in the following colour sequence:

- 3 rows in yarn **A**,
- 1 row in yarn **B**,
- 2 rows in yarn **A**,
- 3 rows in yarn **C**,
- 1 row in yarn **B**,
- 2 rows in yarn **C**.

Repeat for length required. Fasten off yarn.



SPECIAL YARN KEY

C variegated eyelash yarn



16 Pink Ripple

Undulating waves of colour are created by this simple-to-work combination of double and treble crochet stitches. A novelty eyelash yarn adds a new dimension to the pattern; choose one which echoes the main yarn colours.

FOUNDATION CHAIN: multiple of 17 chains plus 2.

Using yarn **A**, make the required length of foundation chain.

ROW 1: (RS) 2 tr into 3rd ch from hook, 2 tr into each of next 2 chs, [sk next ch, 1 tr into next ch] five times, * sk next ch, 2 tr into each of next 6 chs, [sk next ch, 1 tr into next ch] five times; rep from * to last 4 chs, sk next ch, 2 tr into each of last 3 chs, turn.

ROW 2: Ch 1, 1 dc into each tr on previous row, 1 dc into 2nd of beg skipped ch-2, turn.

ROW 3: Ch 3 (counts as 1 tr), 2 tr into each of next 3 dc, [sk next dc, 1 tr into next dc] five times, * sk next dc,

2 tr into each of next 6 dc, [sk next dc, 1 tr into next dc] five times; rep from * to last 4 dc, sk next dc, 2 tr into each of last 3 dc, turn.

ROW 4: Ch 1, 1 dc into each tr on previous row, 1 dc into 3rd of ch-3, turn.

Rep Rows 3 and 4, changing yarns in the following colour sequence:

- 3 rows in yarn **A**,
- 2 rows in yarn **B**,
- 2 rows in yarn **C**,
- 2 rows in yarn **D**,
- 2 rows in yarn **E**,
- 2 rows in yarn **F**,
- 2 rows in yarn **G**.

Repeat for length required. Fasten off yarn.





10 + 1

22 Beaumont Texture

Soft and attractively textured, this stitch pattern shows up well when worked in a solid colour. The pattern of slightly curving ridges is accentuated when narrow bands of colour are contrasted with deeper bands worked in a pale variegated yarn.

CO a multiple of 10 sts plus 1.

ROW 1: (RS) K1, * K2tog, K2, YO, K1, YO, K2, K2tog tbl, K1; rep from * to end.

ROWS 2, 4, and 6: K1, P to last st, K1.

ROW 3: K1, * K2tog, K1, YO, K3, YO, K1, K2tog tbl, K1; rep from * to end.

ROW 5: K1, * K2tog, YO, K5, YO, K2tog tbl, K1; rep from * to end.

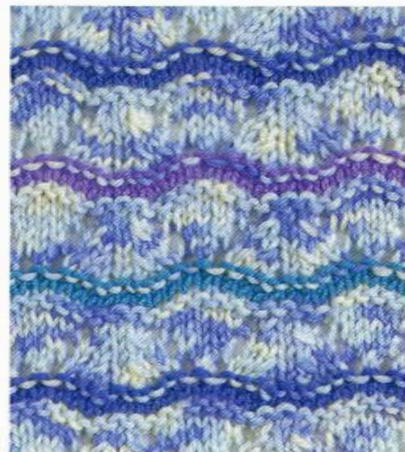
ROWS 7 and 9: K1, P to last st, K1.

ROW 8: K.

ROW 10: K.

Rep Rows 1–10 for length required, ending with a Row 10.

Cast off.



A

B

C

D

23 Sea Spray

Using yarn **A**, CO as left.

Rep Rows 1–10, changing yarns in the following colour sequence and ending with a Row 10:

- 7 rows in yarn **A**,
- * 2 rows in yarn **B**,
- 8 rows in yarn **A**,
- 2 rows in yarn **C**,
- 8 rows in yarn **A**,
- 2 rows in yarn **D**,
- 8 rows in yarn **A**.

Repeat from * for length required.
Cast off.

